

Unit 05: Understand Child and Young Person Develop

LO 1: Understand the expected pattern of development for children and young people from birth – 19 years

The milestones of development for a child are relatively close together since development is more rapid in the early years. The milestones might become more distant as a baby grows into a toddler or child, and the toddler or child grows into a young person.

It is critical to remember that "children and young people are individuals; therefore, their rates of development may differ, and development may not progress with the same degree of equality across all essential areas."

The velocity of development might sometimes be a reason for alarm. However, keep in mind that "everyone is unique, and this must be emphasised, particularly when analysing the rate and growth of a kid or young person."

Development is supposed to move from head to toe, from the inner to the outside, from simple to complex, and from generic to specific.

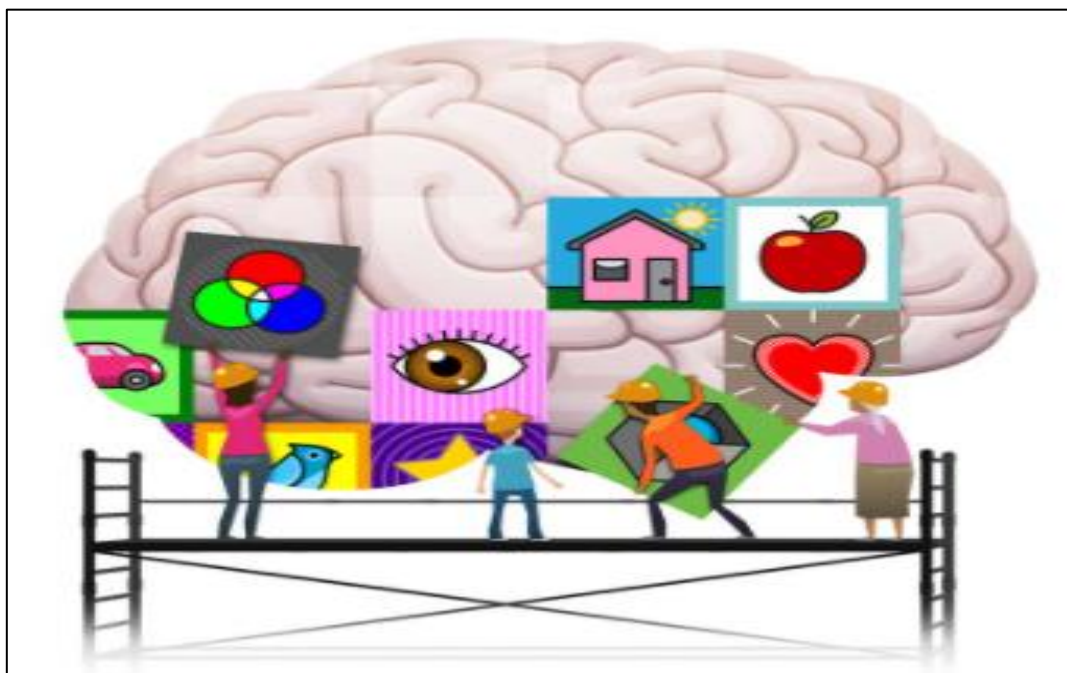
1.1 Describe milestones in children's holistic development from birth to 19 years

LO 2: Understand the factors that influence children and young people's development and how these affect practice

We marvel at every sight of our newborns from the minute they are born. Every milestone, from their first smile to their first stride to their first little wave, is documented (in our minds and, if we're lucky, on camera). As we watch them develop from tiny, vulnerable babies to toddlers and beyond with our sleep-deprived eyes, we are reminded almost daily of what fascinating creatures they are and how wonderful it is that these tiny beings have learnt so much so rapidly.

Brain research would assist you in better understanding the type of care that growing children require. Knowing how the brain works makes it easier to comprehend what you can do to help your child.

Just like a house need a solid foundation to support the walls and roof, your child's brain requires a solid foundation to sustain all future development. The brain development of your child is particularly crucial throughout pregnancy and the early years. This is the time when the groundwork for future learning, behaviour, and health is laid.



2.1 Explain how children and young people's development is influenced by a range of biological factors

2.2 Explain how children and young people's development is influenced by a range of external factors

2.3 Explain how theories of development and educational frameworks influence current practice.

LO 3: Understand how to monitor children and young people's development and interventions that should take place if this is not following the expected pattern

We must monitor the development of children and adolescents.

Visual observations to acquire information are essential in the day-to-day operations of a school. Constantly observing and monitoring children's growth as they advance through school is another crucial task to be performed.

Oscar's job as a Higher-level teaching assistant (HLTA) requires him to analyse the children he works with. He stated, "I will check reading diaries regularly to see if a youngster is reading at home. Other visual observations include checking for unusual injuries/bruising while changing for P.E. and monitoring a child's mental well-being if they appear upset or uncomfortable in any manner. I would also be concerned if I detected any hearing or vision problems."

He went on to say, "My connection with the children during lessons offers me a good image of their progress as well." Listening, watching how they connect with others, and studying what they do are all beneficial. If I notice anything that worries me, I will make time to provide verbal criticism to the class teacher or to make a brief note of my observations."

1. Explain how to monitor children and young people's development using different methods
 2. Identify how other professionals and different types of interventions can promote positive outcomes for children and young people where development is not following the expected pattern
- Explain how disability may affect development.